



Facsimile

### LAB-GROWN DIAMOND REPORT

Report No : SGLXD426377E

MUMBAI

#### GRADING INFORMATION

Shape Round Brilliant

Carat Weight 1.49 carat

Clarity Grade VVS2

Color Grade E

Cut Grade:

Proportions Very Good

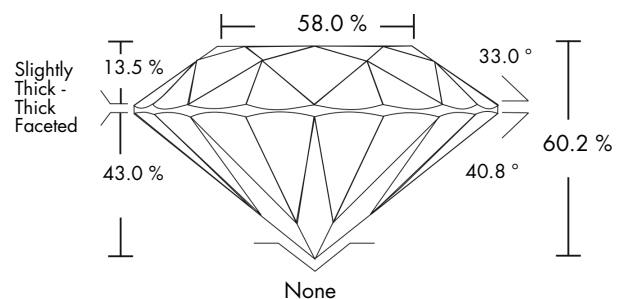
Polish Very Good

Symmetry Very Good

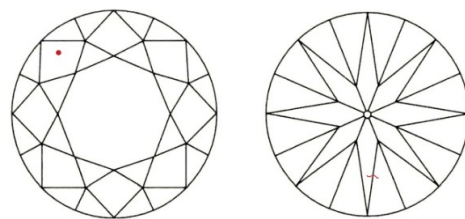
Fluorescence None

Laser Inscribed LAB GROWN SGLXD426377E

### PROPORTIONS



### CHARACTERISTICS



#### Key to symbols



Red symbols denote internal characteristics. Green and Black symbols denote external characteristics. Symbols do not usually reflect the exact shape or size of the characteristics. All characteristics may not be shown.

[www.sgl-labs.com](http://www.sgl-labs.com)

### TECHNICAL INFORMATION

Measurements 7.35 - 7.41 x 4.45 mm

Girdle Slightly Thick - Thick

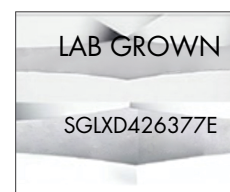
Culet None

Depth 60.2 %

Table Width 58.0 %

Crown Height 13.5 %

Pavilion Depth 43.0 %



LASER INSCRIPTION



Scan the code with a smartphone to view the certificate on our website



AUTHENTICATED IN SGL



### LAB-GROWN DIAMOND REPORT

Report No.SGLXD426377E

MUMBAI

#### GRADING RESULTS

Shape Round Brilliant

Carat Weight 1.49 carat

Clarity Grade VVS2

Color Grade E

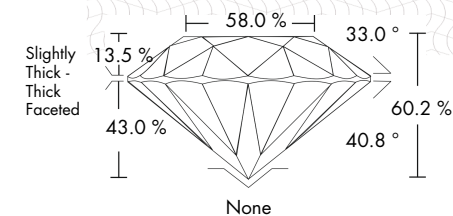
Cut Grade Value Very Good

#### ADDITIONAL GRADING INFORMATION

Cut Polish Very Good

Cut Symmetry Very Good

Fluorescence None



Report No. SGLXD426377E

#### GRADING INFORMATION

Shape Round Brilliant

Carat Weight 1.49 carat

Clarity Grade VVS2

Color Grade E

Cut Grade :

Proportion Very Good

Polish Very Good

Symmetry Very Good

Fluorescence None

Laser Inscribed LAB GROWN SGLXD426377E

#### TECHNICAL INFORMATION

Measurements 7.35 - 7.41 x 4.45 mm

Girdle Slightly Thick - Thick

Culet None

Total Depth 60.2 %

Table Width 58.0 %

Crown Height 13.5 %

Pavilion Depth 43.0 %

